

ASC100

One decoiler, 4 configurations.

La soluzione flessibile: 4 diverse configurazioni intercambiabili dall'operatore.

Die flexible Lösung: 4 Einstellmöglichkeiten zur Auswahl.

4 configurations possibles avec un même dévidoir, aux choix de l'opérateur.

La solución flexible: 4 diferentes configuraciones que el operador puede cambiar.

POSSIBLE CONFIGURATIONS

CONFIGURATION A: REDUCED DIMENSIONS VERTICAL AXIS



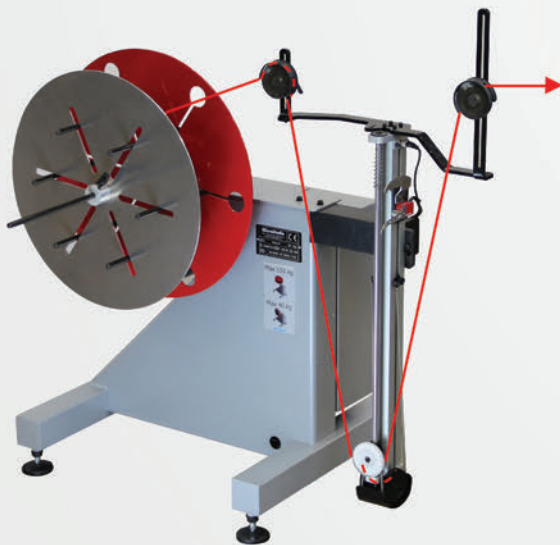
- Spazio di ingombro ridotto
- Dimensioni ridotte
- Reduzierte Abmessungen
- Dimensiones reducidas

CONFIGURATION B: EVEN FOR THICKER WIRE VERTICAL AXIS



- Anche per filo più grosso
- Mêmes pour un fil plus épais
- Auch für dickeren Draht
- Incluso para alambre más grueso

CONFIGURATION C: RECOMMENDED FOR SMALL SPOOLS HORIZONTAL AXIS



- Ideale per piccole bobine
- Idéal pour petites bobines
- Empfohlen für kleine Spulen
- Ideal para carretes pequeños

CONFIGURATION D: REDUCED DIMENSIONS HORIZONTAL AXIS



- Spazio di ingombro ridotto
- Dimensioni ridotte
- Reduzierte Abmessungen
- Dimensiones reducidas



Recommended wire diameter
 Diametro filo raccomandato
 Empfohlene Drahtstärke
 Largeur du fil recommandé
 Diámetro hilo recomendado

Possible configurations
 Configurazioni possibili
 Mögliche Konfigurationen
 Configurations possibles
 Configuraciones posibles

Capacity
 Capacità di carico
 Tragfähigkeit
 Portée utile
 Capacidad de carga

Supports
 Supporti
 Stützen
 Supports
 Soportes

Plate
 Platto
 Platteau
 Plato

Inside bundle diameter
 Diametro interno bobina
 Bund Innendurchmesser
 Diamètre intérieur de la bobine
 Diámetro interior bobina

Speed
 Velocità
 Geschwindigkeit
 Vitesse
 Velocidad

ASC100-06-V1

ASC100-08-V1

$\varnothing 0,1 \div 1$ mm for conf. B + C
 $\varnothing 0,1 \div 0,6$ mm for conf. A

A + B + C + D

A + B

100 Kg for conf. A + B
 50 Kg for conf. C + D

100 Kg

Spool and bundle

 $\varnothing 620$ mm $\varnothing 800$ mm $\varnothing 100 \div 420$ mm $\varnothing 200 \div 640$ mm

130 rpm

		CONFIGURATION A	CONFIGURATION B	CONFIGURATION C	CONFIGURATION D
Dimensions Ingombro Abmaße Dimensions Tamaño	ASC100-06-V1	920 x 750 x 1450 H mm	1280 x 750 x 1450 H mm	1280 x 970 x 1450 H mm	750 x 950 x 1200 H mm
	ASC100-08-V1	840 x 1100 x 1450 H mm	840 x 1400 x 1450 H mm	-	-

OPTIONAL

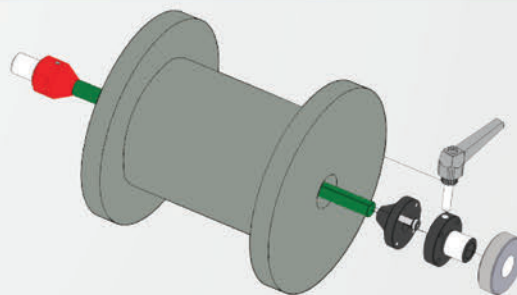
ASC-OP-01



FIXING ROD

- Tirante di fissaggio
- Befestigungsgewindestange
- Broche de centrage
- Tirante de fijado

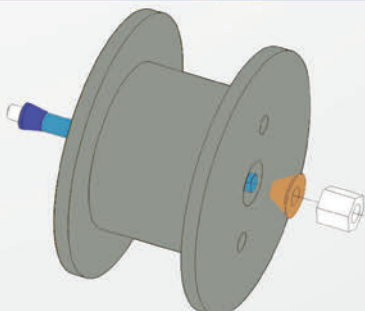
ASC-OP-13



KIT FOR SMALL SPOOL

Spool center hole: min. $\varnothing 20$ mm - max. $\varnothing 33$ mm
 Spool length: min. 50 mm - max. 250 mm

ASC-OP-14



KIT FOR DIN355 SPOOL

Spool center hole: min. $\varnothing 30$ mm - max. $\varnothing 58$ mm
 Spool length: min: 60 mm - max. 200 mm

ASC-OP-15



KIT FOR SK460 SPOOL